



# Medicaid Care Management Medicaid Clients

*It's time to pick a health plan!\**

## 3 Plans To Pick From



## 3 Ways To Enroll

### By Phone

Call the Enrollment Center  
at 1-888-901-4999.

### On-Line

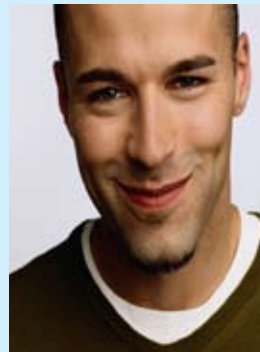
Visit NH EASY at  
[www.nheasy.nh.gov](http://www.nheasy.nh.gov)

### By Mail

Send in the selection form  
you got in the mail.

## For more information

Visit the DHHS website at [www.dhhs.nh.gov](http://www.dhhs.nh.gov) and click on  
or scan



## For updates

Check us out on the web. Find us on Facebook.  
Follow us on Twitter @MHMedicaidCM

\* Your Medicaid coverage will not change. Dental and long term care supports will continue to be covered under Medicaid. With the new Health Plans, you will have access to extras like care coordination and incentives to stay healthy!